

VERUS

ENGINEERING

Front Splitter Kit – 10th Gen Honda Civic Type R

Install Manual



Author: Eric Hazen

Release Date: 2019/09/13

Approvals: E. Hazen, C. Warner

Document Revisions

Rev	Date	Author	Description
01	2019/09/13	E. Hazen	Initial release of install manual

Front Splitter, Honda Civic Type R – Install Manual

CONTENTS

1. Introduction	<3>
1.1. Overview	<3>
1.2. Difficult	<3>
1.3. Time Required	<3>
1.4. Tools Needed	<3>
1.5. Front Splitter Kit Components	<3-4>
2. Front Splitter Disassembly	<4-9>
3. Support Rod Install	<9-13>
4. Front Splitter Install	<13-16>

Front Splitter, Honda Civic Type R – Install Manual

1. Introduction

1.1. Overview: Detailed instructions on installing the Verus Engineering Front Splitter Kit for the Honda Civic Type R.

1.2. Difficulty: Easy - Moderate

1.3. Time Required: 2-3 hour

1.4. Tools Needed:

- 1.4.1.** Philips Screwdriver
- 1.4.2.** Flat Head Screwdriver
- 1.4.3.** 10mm Socket
- 1.4.4.** 12mm Socket
- 1.4.5.** Ratchet
- 1.4.6.** 9/16 Wrench
- 1.4.7.** 5mm Allen Wrench/Socket
- 1.4.8.** 4mm Allen Wrench/Socket
- 1.4.9.** Center Punch
- 1.4.10.** Drill
- 1.4.11.** Stepped Drill Bit (3/8" size necessary)
- 1.4.12.** Ruler
- 1.4.13.** Sharpie

1.5. Front Splitter Components

- 1.5.1.** Front Splitter
- 1.5.2.** Front Splitter Support Brace
- 1.5.3.** Hardware Bag
 - 1.5.3.1.** (1) M6x1.0 Rivet Nut Install Tool
 - 1.5.3.2.** (10) M6x1.0 Rivet Nut, Specifically for Plastic
 - 1.5.3.3.** (2) M6x1.0 Rivet Nut, Aluminum
 - 1.5.3.4.** (4) Rivet Nut Backing Washers, Stainless
 - 1.5.3.5.** (14) M6x1.0 BHCS (Button Head Cap Screw, 30mm Long, Stainless
 - 1.5.3.6.** (6) M6x1.0 BHCS, 25mm Long, Stainless
 - 1.5.3.7.** (4) M6 x 12mm OD Washer, Stainless
 - 1.5.3.8.** (16) M6 x 38mm OD Washer, Stainless
 - 1.5.3.9.** (2) M6x1.0 Low Profile BHCS, 30mm Long
 - 1.5.3.10.** (2) Adjustable Support Rod Assembly
 - 1.5.3.11.** (4) Support Rod Assembly Spacer
 - 1.5.3.12.** (2) Clevis, M6 Thread
 - 1.5.3.13.** (2) Clevis, No Thread

Front Splitter, Honda Civic Type R – Install Manual

**2. Front Splitter Disassembly**

- 2.1. Verus Engineering is not responsible for damage to you or your vehicle by following this manual and/or installing Verus Engineering products.
- 2.2. We begin by either jacking the vehicle up or lifting it up on the lift. We utilized a lift for this specific install but jacking the rear up would be perfectly acceptable.
- 2.3. First, we will get a base view of what we are dealing with.



- 2.4. For the install, we will be removing a large portion of the plastic underbody panel shown above. These are held on with plastic rivets and a few bolts.
- 2.5. Remove the 10mm bolt as shown below.

Front Splitter, Honda Civic Type R – Install Manual



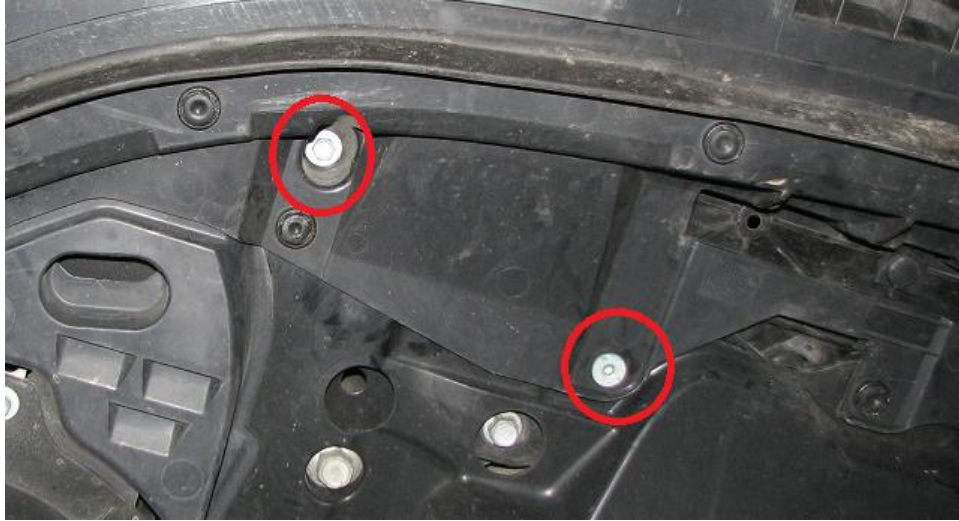
2.6. Remove the Philips screw on the back of the front lip, as shown below.



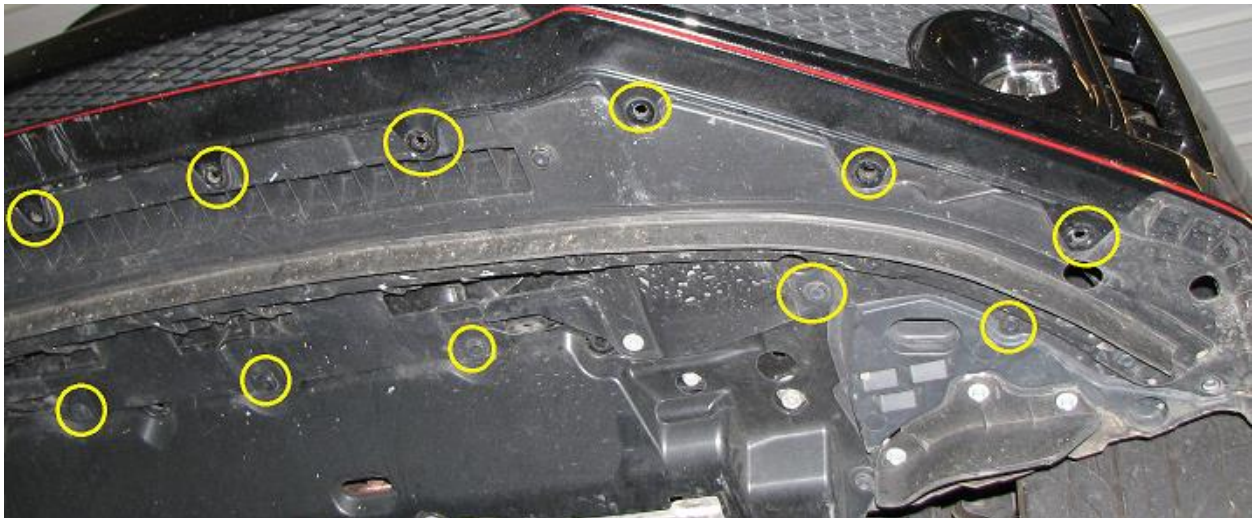
2.7. Remove the bolts circled below, one is an allen bolt, the other is a standard hex head bolt.

Confidential: Property of Verus Engineering. Not for Distribution outside intended recipient list.

Front Splitter, Honda Civic Type R – Install Manual



- 2.8.** The remainder of what is holding the underbody panel on should be plastic rivets. These are removed by popping up the center section and then pulling the unit out. Most of these are circled below in yellow, there are a few others towards the back of the panel that needed removed as well.

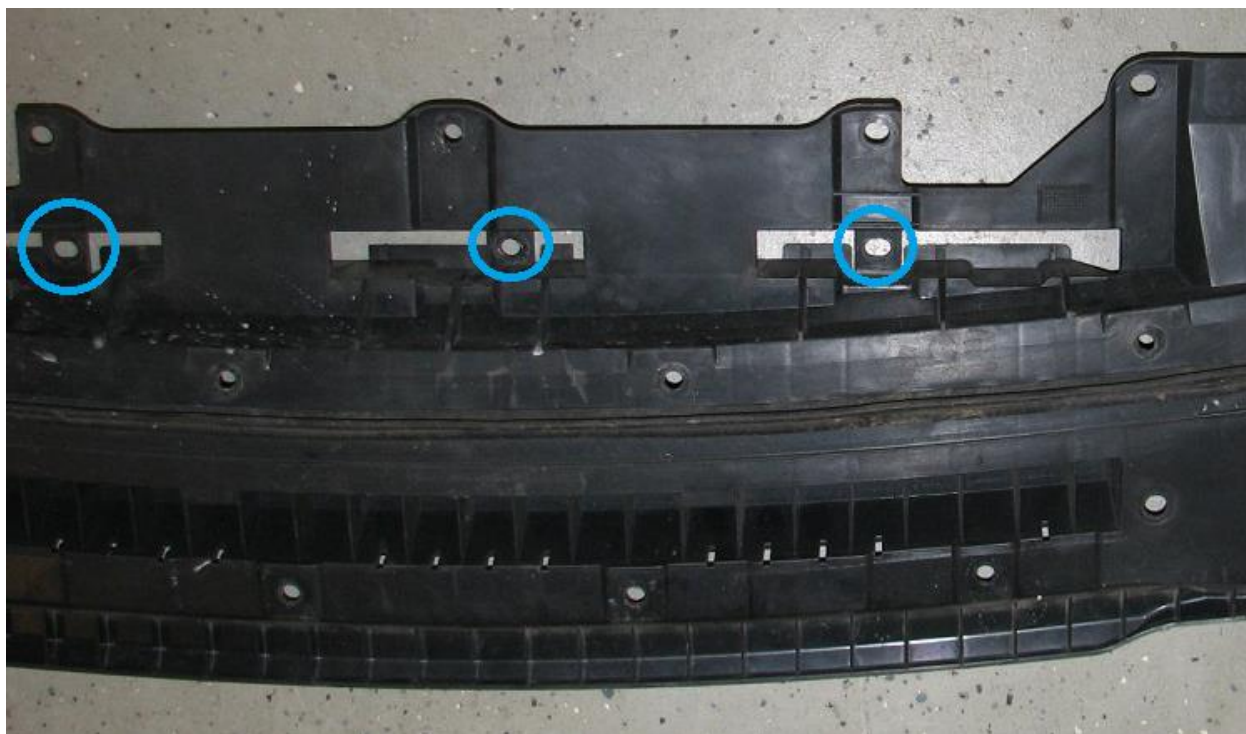


- 2.9.** With all the fasteners removed, we can remove the panel by pulling it down and out from the bumper. You can now see all the plastic rivets removed and what all removes from the car.

Front Splitter, Honda Civic Type R – Install Manual



2.10. A few of the plastic rivets we were not able to get a picture of in 2.8 are circled below.

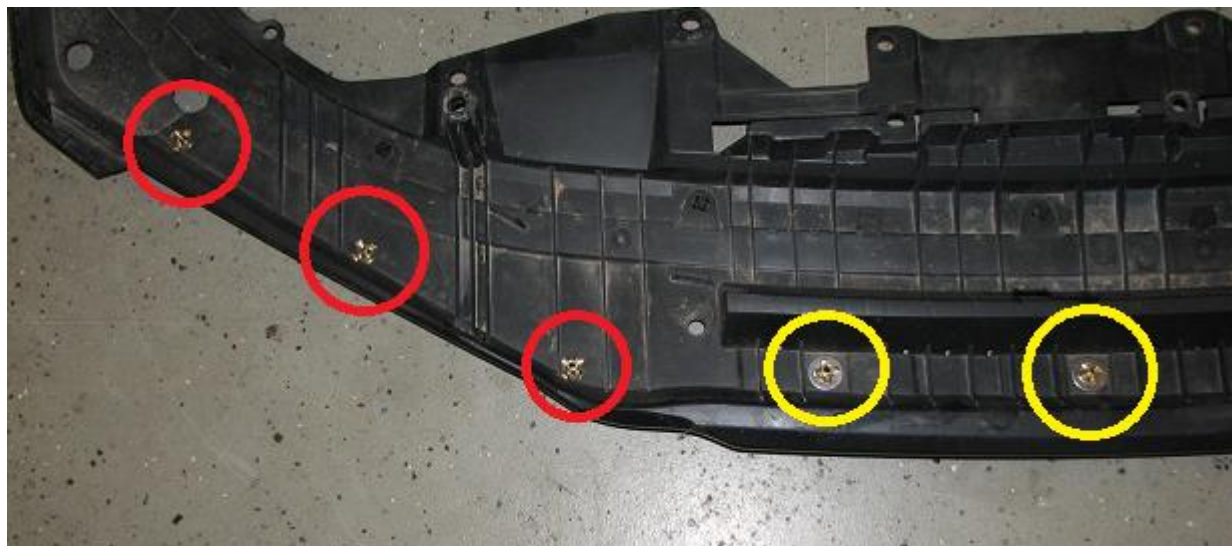


2.11. At this time, we can install the plastic rivets into this panel.

2.12. The below photo shows the proper locations to install the rivet nuts on half of the underbody panel. Note that the yellow circles show the backing washer, and the red circles show no backing washer installed. Refer to step 2.14 for further clarification.

Confidential: Property of Verus Engineering. Not for Distribution outside intended recipient list.

Front Splitter, Honda Civic Type R – Install Manual



- 2.13.** To properly install the rivet nut, you will want to thread the rivet nut onto the tool as shown below.



- 2.14.** Place the rivet nut into the hold. If you would like to use the rivet nut backing washer, they will be installed on the front most (4) holes. Note, the backing washer is not necessary but will decrease the chance that the rivet gets pulled through the OE plastic.

Front Splitter, Honda Civic Type R – Install Manual



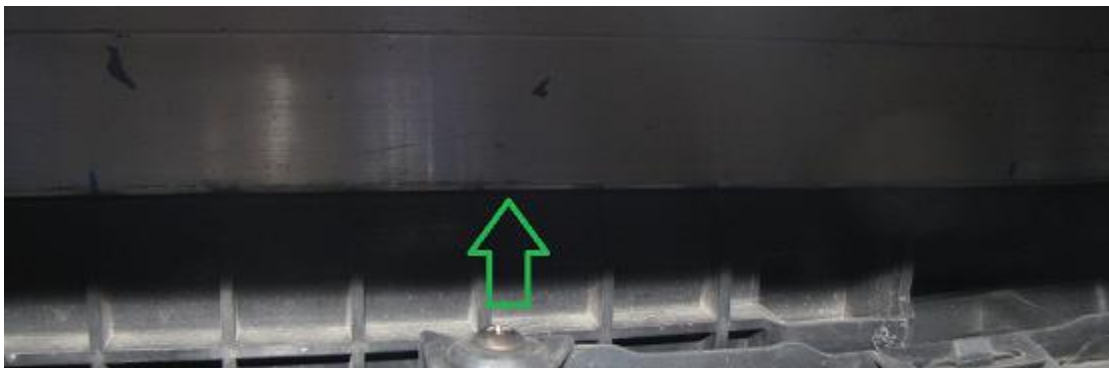
2.15. Using the 9/16" wrench and the 5mm allen wrench, hold the nut steady and tighten the allen bolt. You'll have some initial resistance, then the rivet nut will begin to pull tighter on the material. **Use lubricant on the bolt and use the other bolt if it begins having a hard time pulling the rivet.**

2.16. Alternatively you can purchase or rent a rivet nut install tool from your local hardware store or automotive store. Shown below is another tool to use for install which is easier to use.



3. Support Rod Install

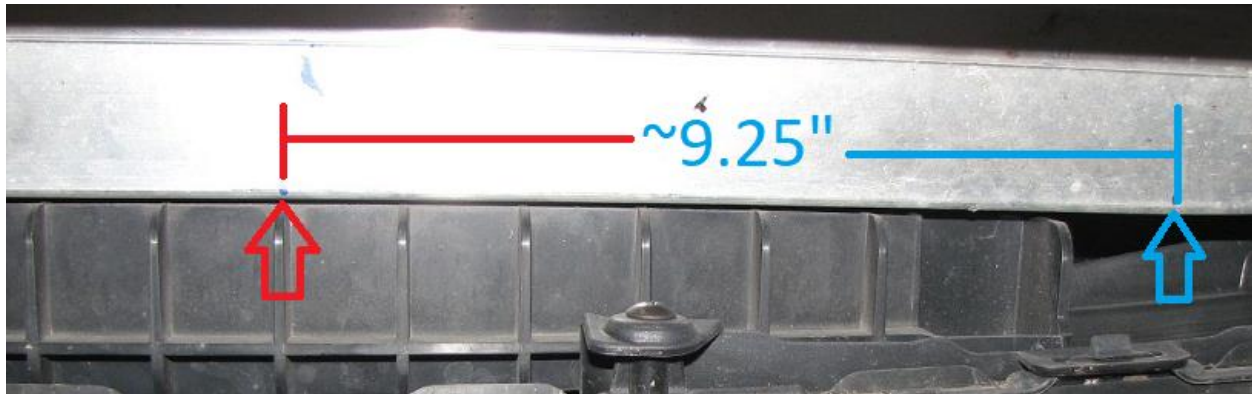
3.1. With the plastic underbody panel ready to be re-installed, we can get a clear view of the OE crash beam which we will be using as support.



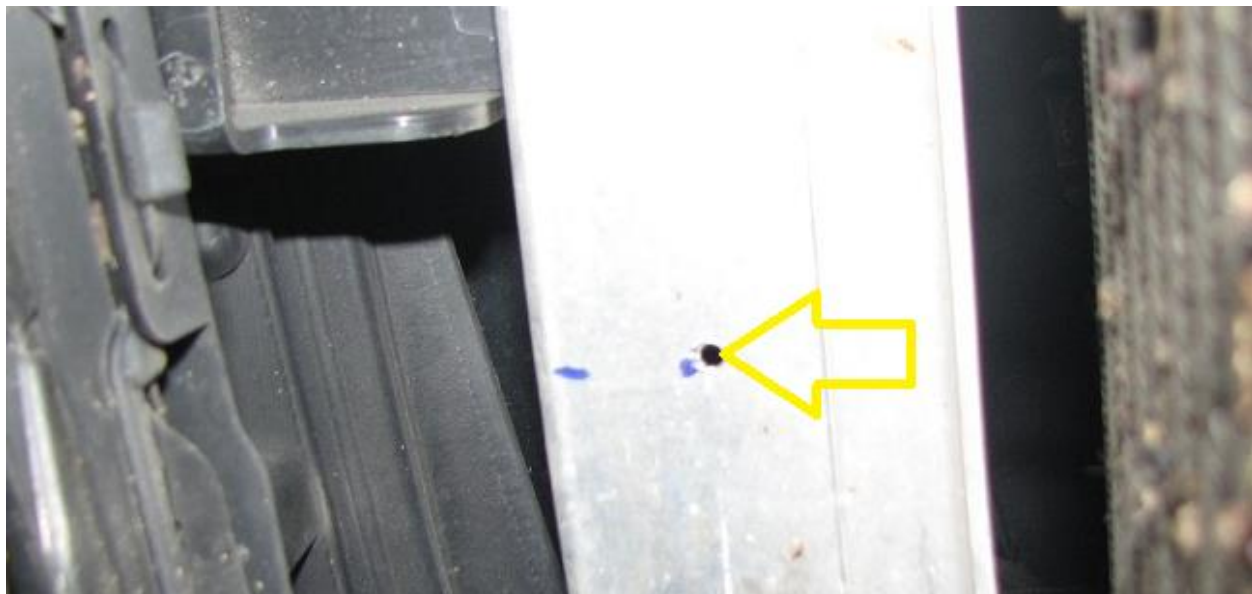
Confidential: Property of Verus Engineering. Not for Distribution outside intended recipient list.

Front Splitter, Honda Civic Type R – Install Manual

- 3.2.** Using a sharpie, we will work on marking the locations necessary for drilling.
- 3.3.** The support brace is roughly 18.5" slot center to slot center. So we will find the center of the crash beam (red arrow) and then measure 9.25" from there to mark a hole center (blue arrow).



- 3.4.** Using a center punch, punch a hole approximately 1" away from the front of the crash beam.
- 3.5.** Using a starter drill bit, drill a 1/8" hole as shown below.



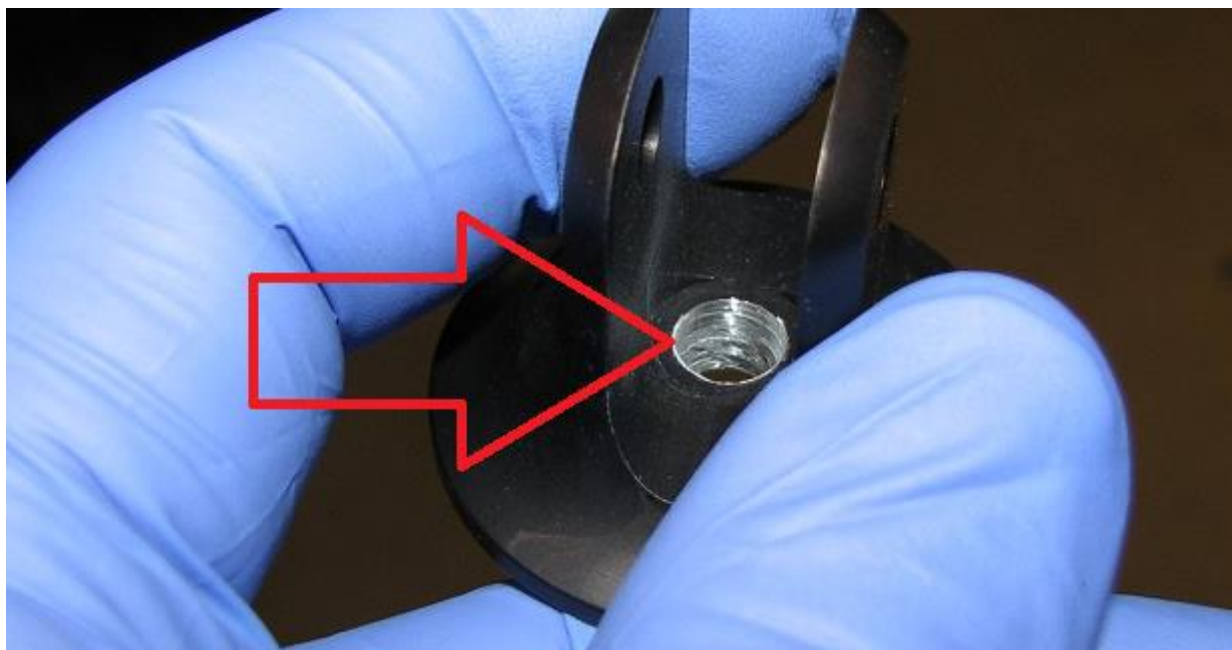
- 3.6.** Open this hole up to 3/8".

Front Splitter, Honda Civic Type R – Install Manual



3.7. Install the aluminum rivet nut in this location with the supplied tool, similarly to steps 2.13/2.14.

3.8. Grab the clevis which has the center hole through drilled.



Confidential: Property of Verus Engineering. Not for Distribution outside intended recipient list.

Front Splitter, Honda Civic Type R – Install Manual

- 3.9.** Utilizing the low-profile button head cap screws, we can install this clevis into the crash beam.



- 3.10.** Before fully tightening the clevis, we will want to snake a support rod through the grill to ensure it lines up well with the clevis. The goal is to have the support rod going longitudinally with the vehicle.



- 3.11.** If all looks good, remove the support rod and then fully tighten the clevis.

Confidential: Property of Verus Engineering. Not for Distribution outside intended recipient list.

Front Splitter, Honda Civic Type R – Install Manual

- 3.12.** On the support rod we will install the (2) supplied lengthening spacers that are included (orange arrows). This will be the upper side of the support rod that goes through the grill.



- 3.13.** Install the now assembled support rod through the grill. Use the 25mm long bolts, with the small washers, and a serrated nut on the clevis.



4. Splitter Install/Reassembly

- 4.1.** Now that the support rods are installed, we can re-install the underbody plastics and install the splitter.
- 4.2.** Starting with the underbody plastic, re-install in reverse order. Where there are rivet nuts now, do not install plastic rivets.

Front Splitter, Honda Civic Type R – Install Manual



- 4.3.** Reinstall all bolts and plastic rivets into the OE panel.
- 4.4.** Utilizing the longer M6 BHCS bolts and the oversized fender washers, install the splitter into the rivet nuts as shown below.



- 4.5.** We can now finalize the install by installing the support rods on the front of the splitter with the support bracket underneath.
- 4.6.** The splitter is pre-drilled. Install the clevis' on the top by using a bolt and oversized washer on the bottom side, under the support bracket; with the clevis on top. Do not fully tighten at this time.

Front Splitter, Honda Civic Type R – Install Manual



- 4.7. Slip the clevis and rod end together and finally bolt the pieces together with the 25mm long BHCS, a small washer, and serrated nut.
- 4.8. Fully tighten splitter bolts.
- 4.9. Ensure splitter is parallel to the ground with a level. Lengthen or shorten the splitter tie rods as necessary to achieve correct install angle.
- 4.10. Congratulations on installing our 10th Generation Civic Type R Front Splitter Kit. Please send any questions, comments, concerns, or photos to Verus Engineering via e-mail; sales@verus-engineering.com.



Front Splitter, Honda Civic Type R – Install Manual



Confidential: Property of Verus Engineering. Not for Distribution outside intended recipient list.