



Control Arm Guide Strake Kit – C8 Corvette

Install Manual



Author: M. Deckard
Release Date: 2025/09/02
Approvals: E. Hazen

Document Revisions

Rev	Date	Author	Description
01	2025/09/02	M. Deckard	Initial release of install manual
02	2025/12/16	M. Deckard	Update of design and hardware

Control Arm Guide Strake Kit, C8 Corvette – Install Manual

Contents

Introduction	3
Overview	3
Difficulty.....	3
Time Required.....	3
Tools Recommended	3
Control Arm Guide Strake Kit Components	4
Control Arm Guide Strake Install	5

Control Arm Guide Strake Kit, C8 Corvette – Install Manual

Introduction

Overview: Detailed instructions on installing the Verus Engineering Control Arm Guide Strake Kit on the C8 Corvette.

Difficulty: Beginner

Time Required: 0.5-1 hour

Tools Recommended:

- 8 mm socket
- 7mm socket or wrench
- Short extension (optional)
- Ratchet
- 2.5mm Allen key
- 5mm Allen key
- Plastic Trim tool
- 11/64" drill bit
- Drill



Confidential: Property of Verus Engineering. Not for Distribution outside intended recipient list.

Control Arm Guide Strake Kit, C8 Corvette – Install Manual

Control Arm Guide Strake Kit Components

- (1) Left Control Arm Guide Strake
- (1) Right Control Arm Guide Strake
- (1) Hardware bag
 - (8) M4x0.7 16mm Long, Flat Head Cap Screw (FHCS), Stainless Steel (SS)
 - (2) M5 14mm Long, Socket Head Cap Screw (SHCS), SS
 - (8) M4 Fender Washer, SS
 - (2) M5 washer
 - (8) M4 Nyloc Nut
 - (2) M5 Push-on nut



Control Arm Guide Strake Kit, C8 Corvette – Install Manual

Control Arm Guide Strake Install

1. Verus Engineering is not responsible for damage to you or your vehicle by following this manual and/or installing Verus Engineering products. Please seek professional service/guidance if you are uncomfortable/incapable of installing this in a safe manner. Contact us at support@verus-engineering.com if you have any questions/concerns.
2. We first need to safely raise and support the vehicle using a jack and jackstands or a lift if one is available. **Note: You will need access to the underside of the front lower control arm so lift your vehicle accordingly.**
3. Locate the front lower control arm covers. The passenger side is shown below.



4. Use a plastic trim tool to remove the plastic clip that is circled below.



Confidential: Property of Verus Engineering. Not for Distribution outside intended recipient list.

Control Arm Guide Strake Kit, C8 Corvette – Install Manual

5. Now use your 8 mm socket and ratchet to remove the (4) bolts circled below. The control arm cover can now be removed.



6. Repeat **steps 3 – 5** for the remaining side.
7. With the control arm cover removed, we can now test fit the guide strake. This test fit will give us the location of the mounting hole that will need to be drilled.



Control Arm Guide Strake Kit, C8 Corvette – Install Manual

8. Locate the rear hole on the guide strake (shown with a red arrow below) that does not align with the existing slots on the control arm cover.



9. Use your drill and 11/64" drill bit to drill this hole through. Drill as centered and straight as you can. **Note: We drilled the holes with the guide strake still installed. You can also mark where you need to drill with a marker, remove the guide strake, and then drill your mounting hole.**



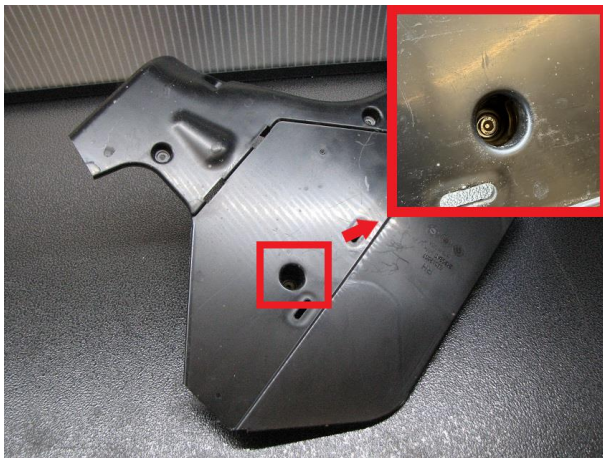
Confidential: Property of Verus Engineering. Not for Distribution outside intended recipient list.

Control Arm Guide Strake Kit, C8 Corvette – Install Manual

10. Repeat **steps 7 – 9** for the remaining side.
11. Once the mounting hole for the guide strake has been drilled, remove the control arm guide strake from the control arm cover.

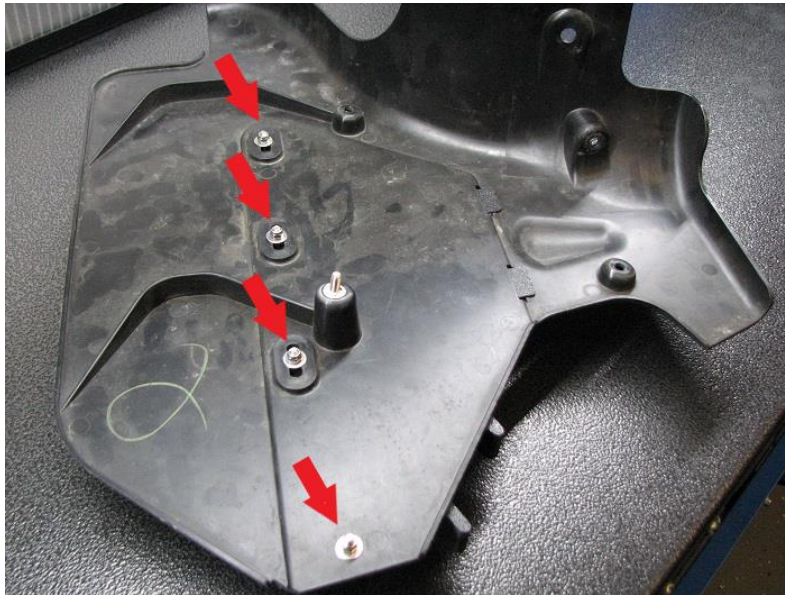


12. Install the M5 SHCS and 12mm OD washer into the lower control arm cover using the M5 push-on nut.



Control Arm Guide Strake Kit, C8 Corvette – Install Manual

13. Now, slide the guide strake up into place and use the M4 FHCS with an M4 fender washer and M4 Nyloc nut on the top side to fasten the strake to the control arm cover. **Note: The M4 hardware only requires a few inch pounds of torque because they are being used with the Nyloc nuts.**



14. Repeat **Steps 11 – 13** for the remaining side.
15. Install the control arm covers by starting with the M5 SHCS (Red) using the access hole in the guide strake. Then, reinstall the (3) OEM fasteners (Orange), and plastic push clip (Yellow).



Confidential: Property of Verus Engineering. Not for Distribution outside intended recipient list.

Control Arm Guide Strake Kit, C8 Corvette – Install Manual

16. Repeat **Step 15** for the remaining side.
17. Congratulations! You have just completed installation of the Verus Engineering Control Arm Guide Strakes on your C8 Corvette!
18. Please contact Verus Engineering with any questions, comments, concerns, and feedback via support@verus-engineering.com.

