



Author: Clay Warner
Release Date: 2024/3/19
Approvals: E. Hazen

Document Revisions

Rev	Date	Author	Description
01	2024/3/19	C. Warner	Initial release of install manual

G87 BMW M2 Side Splitter – Install Manual

CONTENTS

1. Introduction.....	<3>
1.1. Overview.....	<3>
1.2. Difficulty.....	<3>
1.3. Time Required	<3>
1.4. Tools Needed	<3>
1.5. Side Splitter Components	<3-4>
2. Side Splitter Install	<4-6>

G87 BMW M2 Side Splitter – Install Manual

1. Introduction

1.1. Overview: Detailed instructions on installing the Verus Engineering Side Splitter Kit for the G87 BMW M2.

1.2. Difficulty: Easy to Moderate

1.3. Time Required: 1 – 1.5 hours

1.4. Tools Needed:

1.4.1. Ratchet

1.4.2. 10mm Socket

1.4.3. T25 Torx Bit and/or Socket



1.5. Side Splitter Components

1.5.1. Left Hand Side Splitter

1.5.2. Right Hand Side Splitter

1.5.3. Hardware Bag

1.5.3.1. (14) #10 x 1.50" Torx Head Cap Screw (THCS), Stainless

1.5.3.2. (2) #10 x 2.00" THCS, Stainless

1.5.3.3. (14) #10 x 1.00" OD Washer, Stainless

1.5.3.4. (2) M6 x 18mm OD Fender Washer, Stainless

1.5.3.5. (8) 5mm Long Spacer, Nylon

1.5.3.6. (10) 7.5mm Long Spacer, Nylon

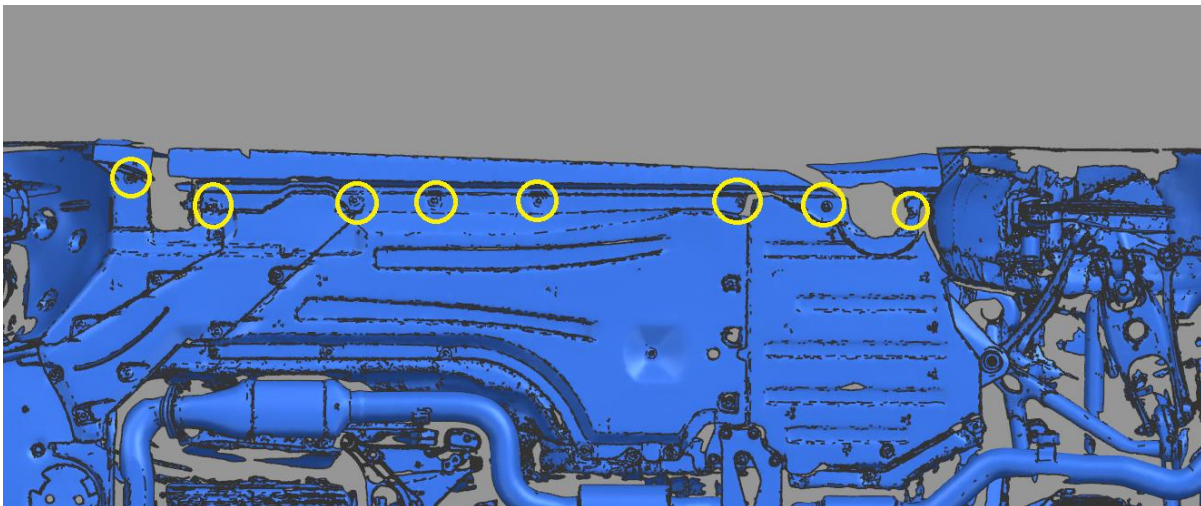
1.5.3.7. (8) 10mm Long Spacer, Nylon

G87 BMW M2 Side Splitter – Install Manual



2. Side Splitter Install

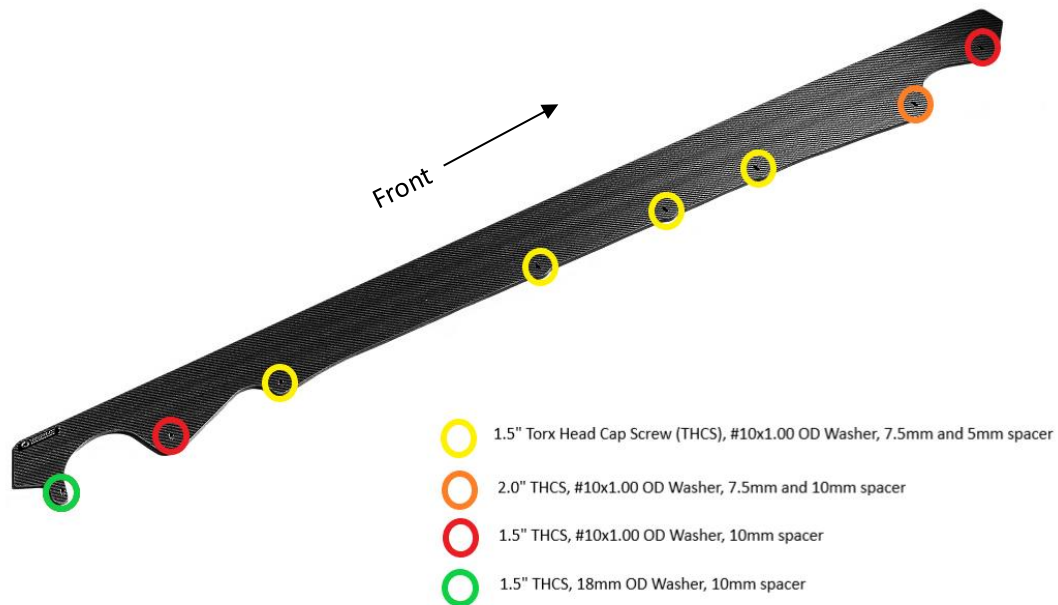
- 2.1. Verus Engineering is not responsible for damage to you or your vehicle by following this manual and/or installing Verus Engineering products.
- 2.2. We begin by jacking up either side of the car. Start with either the driver or passenger side of the car and place the car on jack stands.
- 2.3. With the car on jack stands, we need to remove the factory 10mm bolts shown below circled in yellow. **Note: There are 8 bolts that need to be removed per side.**



- 2.4. Grab one of the side splitters and refer to the diagram below for bolt, washer, and spacer locations. The black logo plate is intended to be facing upward and at the rear of the vehicle but can be installed downward if you prefer that look.

Confidential: Property of Verus Engineering. Not for Distribution outside intended recipient list.

G87 BMW M2 Side Splitter – Install Manual



- 2.5. The spacers need to be placed between the side splitter and the factory side skirt mounting location. **(THCS > washer > side splitter > spacer(s) > factory side skirt mounting hole)**
- 2.6. With an extra set of hands to help steady the side splitter, start installing the bolts, washers, and spacers as listed above. **Note: We recommend starting from the one front and working your way towards the rear. This gives you the most room to slip the spacers into place.**
- 2.7. Once the side splitters are extended to your liking, torque the bolts to 6 ft-lbs.
- 2.8. Repeat the same process for the remaining side.
- 2.9. You have successfully completed the install of the Verus Engineering Side Splitter Kit for the G87 BMW M2.
- 2.10. Please contact Verus Engineering with any questions, comments, concerns, and feedback via sales@verus-engineering.com.

G87 BMW M2 Side Splitter – Install Manual



Confidential: Property of Verus Engineering. Not for Distribution outside intended recipient list.