



## Control Arm Guide Strake Kit – C8 Corvette

---

### Install Manual



Author: M. Deckard  
Release Date: 2025/09/02  
Approvals: E. Hazen

#### Document Revisions

Rev	Date	Author	Description
01	2025/09/02	M. Deckard	Initial release of install manual

---

## Control Arm Guide Strake Kit, C8 Corvette – Install Manual

### Contents

Introduction .....	3
Overview .....	3
Difficulty.....	3
Time Required.....	3
Tools Recommended .....	3
Control Arm Guide Strake Kit Components .....	3
Control Arm Guide Strake Install .....	4

## Control Arm Guide Strake Kit, C8 Corvette – Install Manual

## Introduction

**Overview:** Detailed instructions on installing the Verus Engineering Control Arm Guide Strake Kit on the C8 Corvette.

**Difficulty:** Beginner

**Time Required:** 0.5-1 hour

**Tools Recommended:**

- 8 mm socket
- 7mm socket or wrench
- Short extension (optional)
- Ratchet
- 2.5mm Allen key
- Plastic Trim tool
- 11/64" drill bit
- Drill

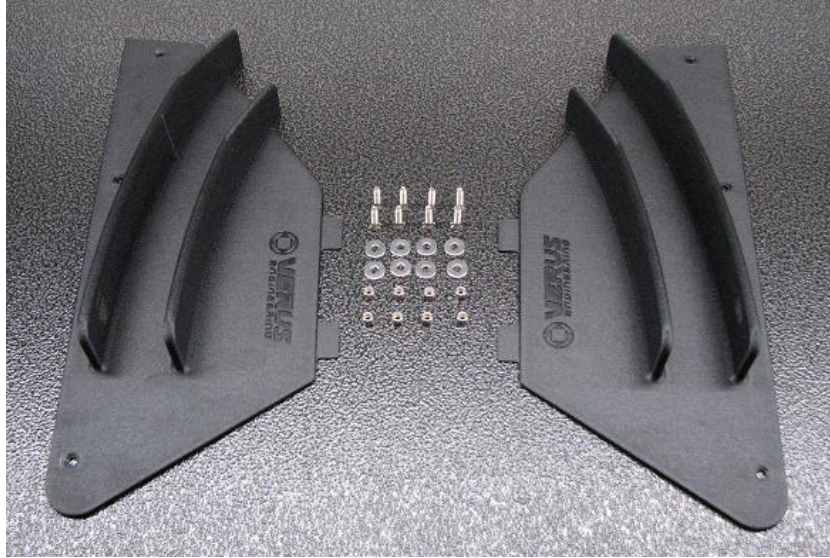


## Control Arm Guide Strake Kit Components

- (1) Left Control Arm Guide Strake
- (1) Right Guide Strake
- (1) Hardware bag
  - (8) M4x0.7 16mm Long, Flat Head Cap Screw (FHCS), Stainless Steel (SS)
  - (8) M4 Fender Washer, SS
  - (8) M4 Nyloc Nut

Confidential: Property of Verus Engineering. Not for Distribution outside intended recipient list.

## Control Arm Guide Strake Kit, C8 Corvette – Install Manual



## Control Arm Guide Strake Install

1. Verus Engineering is not responsible for damage to you or your vehicle by following this manual and/or installing Verus Engineering products. Please seek professional service/guidance if you are uncomfortable/incapable of installing this in a safe manner. Contact us at [support@verus-engineering.com](mailto:support@verus-engineering.com) if you have any questions/concerns.
2. We first need to safely raise and support the vehicle using a jack and jackstands or a lift if one is available. **Note: You will need access to the underside of the front lower control arm so lift your vehicle accordingly.**
3. Locate the front lower control arm covers. The passenger side is shown below.



Confidential: Property of Verus Engineering. Not for Distribution outside intended recipient list.



## Control Arm Guide Strake Kit, C8 Corvette – Install Manual

4. Using a plastic trim tool, remove the plastic clip that is circled below.



5. Now use your 8 mm socket and ratchet to remove the (4) bolts circled below. The control arm cover can now be removed.



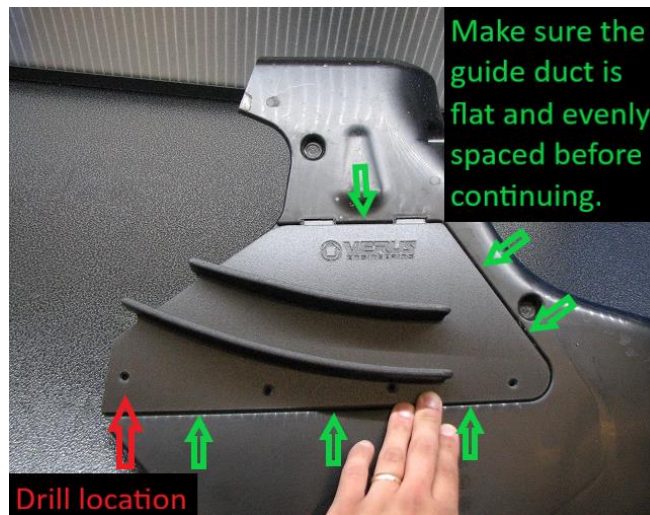
6. Repeat **steps 3 – 5** for the remaining side.
7. With the control arm cover removed, we can now test fit the guide strake. This test fit will give us the location of the mounting hole that will need drilled.

Confidential: Property of Verus Engineering. Not for Distribution outside intended recipient list.

## Control Arm Guide Strake Kit, C8 Corvette – Install Manual



8. Locate the rear hole on the guide strake (shown with a red arrow below) that does not align with the existing slots on the control arm cover.



9. Use your drill and 11/64" drill bit to drill this hole through. Drill as centered and straight as you can. **Note: We drilled the holes with the guide strake still installed. You can also mark where you need to drill with a marker, remove the guide strake, and then drill your mounting hole.**

## Control Arm Guide Strake Kit, C8 Corvette – Install Manual



10. Repeat **steps 7 – 9** for the remaining side.
11. Once the mounting hole for the guide strake has been drilled, remove the control arm guide strake from the control arm cover.



Confidential: Property of Verus Engineering. Not for Distribution outside intended recipient list.



## Control Arm Guide Strake Kit, C8 Corvette – Install Manual

12. Using one of the mounting bolts, partially install the control arm cover using the mounting hole shown below. **Note: The bolt is to be fully tightened at this time.**



13. Now, slide the guide strake up into place and use the M4 FHCS with an M4 fender washer and M4 Nyloc nut on the top side to fasten the strake to the control arm cover. **Note: The M4 hardware only requires a few inch pounds of torque because they are being used with the Nyloc nuts. The guide strake (in the right-hand image) is off of the car to better show the top side with M4 fender washers and nyloc nuts.**



Confidential: Property of Verus Engineering. Not for Distribution outside intended recipient list.



---

Control Arm Guide Strake Kit, C8 Corvette – Install Manual

14. Repeat **Steps 11 – 13** for the remaining side.
15. After control arm guide strakes are installed to the control arm covers, reinstall the remaining (3, per side) 8mm head bolts, and (1, per side) plastic clip.
16. Congratulations! You have just completed installation of the Verus Engineering Control Arm Guide Strakes on your C8 Corvette!
17. Please contact Verus Engineering with any questions, comments, concerns, and feedback via [support@verus-engineering.com](mailto:support@verus-engineering.com).