



Sheet Metal Diffuser – C8 Corvette Stingray

Install Manual



Author: M. Deckard
Release Date: 2025/08/19
Approvals: E. Hazen

Document Revisions

Rev	Date	Author	Description
01	2025/08/19	M. Deckard	Initial release of install manual

Sheet Metal Diffuser, C8 Corvette Stingray – Install Manual

Contents

Introduction	3
Overview	3
Difficulty.....	3
Time Required.....	3
Tools Recommended	3
Rear Diffuser Kit Components	3
Rear Diffuser Install.....	4

Sheet Metal Diffuser, C8 Corvette Stingray – Install Manual

Introduction

Overview: Detailed instructions on installing the Verus Engineering Sheet Metal Rear Diffuser for the C8 Corvette Stingray.

Difficulty: Moderate

Time Required: 2-2.5 hours

Tools Recommended:

- 7mm socket
- 4mm Allen key or socket
- 2.5mm Allen key or socket
- T15 Torx key or socket
- Ratchet or impact
- Trim tool/Clip remover



Rear Diffuser Kit Components

- (1) Main Diffuser Plate
- (1) Right Hand Side Plate
- (1) Left Hand Side Plate
- (1) Right Hand Inner Bracket
- (1) Left Hand Inner Bracket
- (2) Diffuser Strake

Confidential: Property of Verus Engineering. Not for Distribution outside intended recipient list.

Sheet Metal Diffuser, C8 Corvette Stingray – Install Manual

- (1) Hardware bag
 - (6) M6x1.0 25mm long, Button Head Cap Screw (BHCS), Stainless Steel (SS)
 - (21) M6x1.0 16mm long BHCS, SS
 - (14) M6x1.0 16mm long, BHCS, Black Oxide
 - (4) M4x0.7 16mm long, BHCS, SS
 - (4) M4x0.7 16mm long, BHCS, Black Oxide
 - (20) M6 18mm OD Washer, SS
 - (18) 1/4" Washer, Black Oxide
 - (4) M4x0.7 Fender Washer, SS
 - (4) #8 Washer, Black Oxide
 - (15) M6x1.0 Serrated Nut, SS
 - (4) M6x1.0 Clip-on Nut
 - (4) M4x0.7 Clip-on Nut



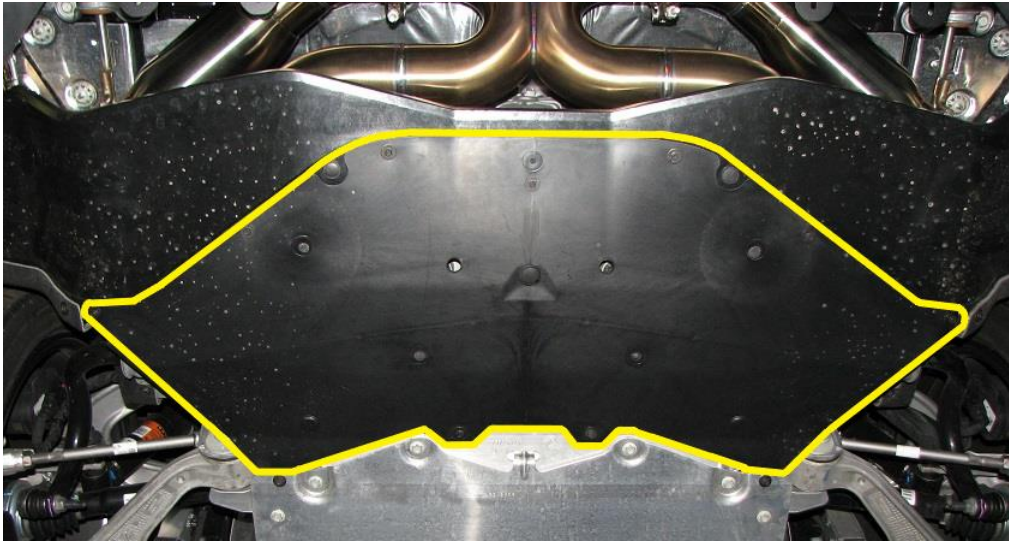
Rear Diffuser Install

1. Verus Engineering is not responsible for damage to you or your vehicle by following this manual and/or installing Verus Engineering products. Please seek professional service/guidance if you are uncomfortable/incapable of installing this in a safe manner. Contact us at support@verus-engineering.com if you have any questions/concerns.

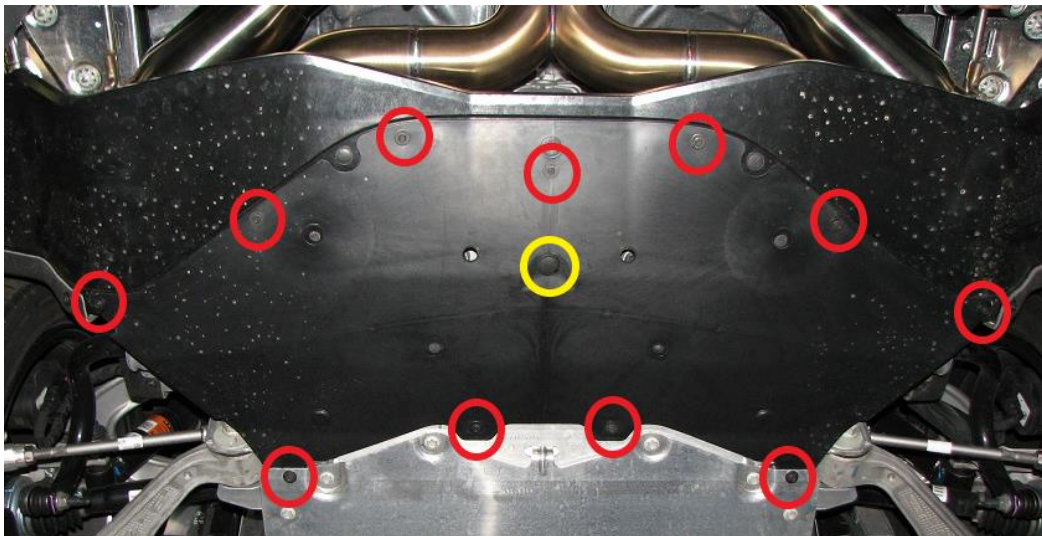
Confidential: Property of Verus Engineering. Not for Distribution outside intended recipient list.

Sheet Metal Diffuser, C8 Corvette Stingray – Install Manual

2. We first need to safely raise and support the vehicle using a jack and jackstands or a lift if one is available.
3. Then, we find the rear splash guard panels located under the transaxle at the rear of the car.



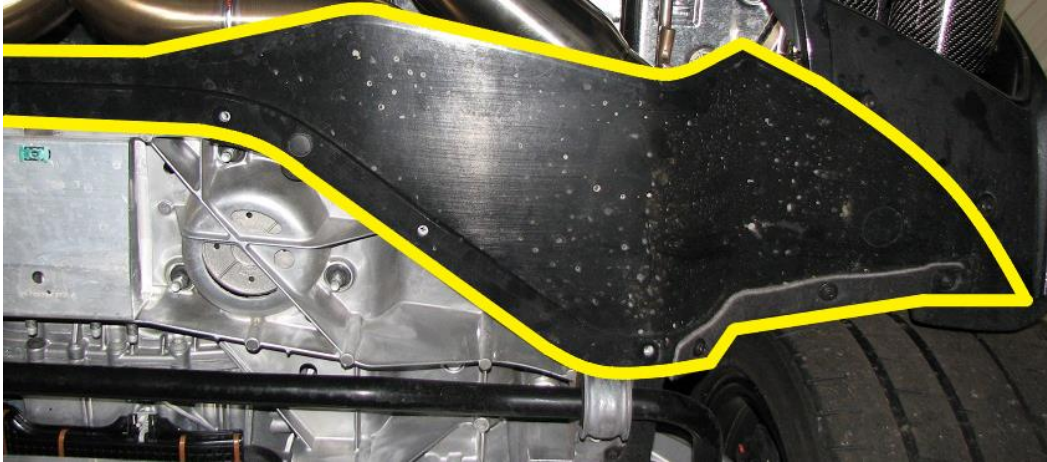
4. To remove the first splash shield, there will be (11, circled in red) 7mm head screws and (1, circled in yellow) plastic push clip. **Note: This splash shield will not be reused with the diffuser. However, we will need to use (2) clip-on nuts from this so keep it close for now.**



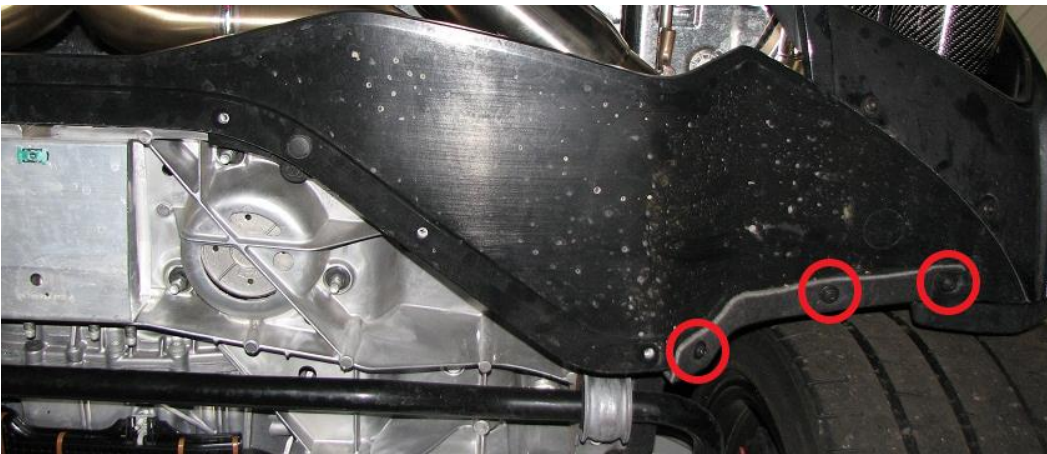
5. With this shield out of the way, we can remove the remaining splash shield that runs the width of the car. The passenger side of this splash shield is outlined below. **Note: This splash shield will not be reused with our new diffuser. Safely store or discard the shield at this time.**

Confidential: Property of Verus Engineering. Not for Distribution outside intended recipient list.

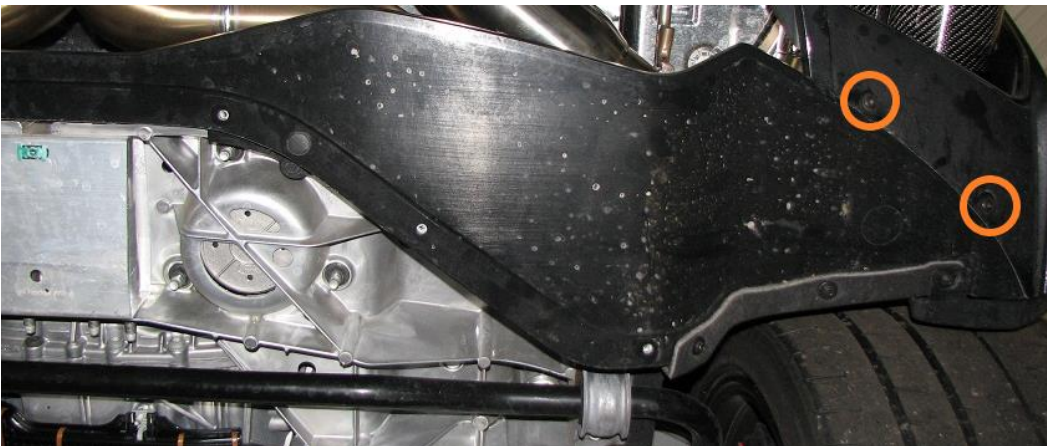
Sheet Metal Diffuser, C8 Corvette Stingray – Install Manual



6. Remove the (6 total) 7mm head screws (passenger side circled in red below) for the splash shield first.



7. Next, remove (4 total) T15 screws (passenger side circled in orange below).



Confidential: Property of Verus Engineering. Not for Distribution outside intended recipient list.

Sheet Metal Diffuser, C8 Corvette Stingray – Install Manual

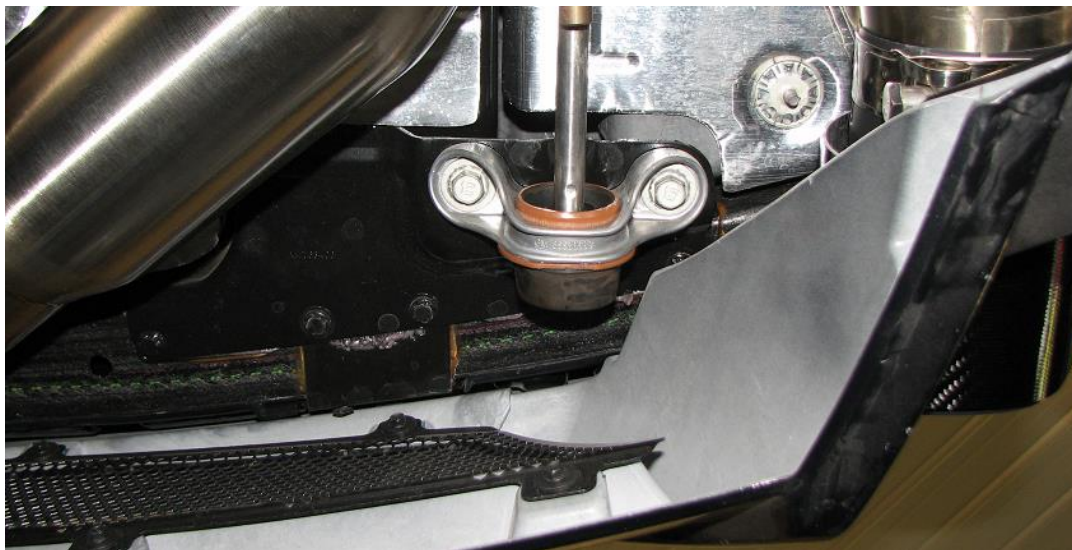
8. Finally, remove the (2 total) plastic push clips (passenger side circled in yellow below). The splash shield is now free to be removed.



9. This piece, removed from the car is below.



10. Now, shift your attention to the exhaust hangers. There is one located inside the exhaust tips on either side of the car. **Note: The vehicle in the image below has an aftermarket exhaust. Visibility of the exhaust hangers may vary depending on your current exhaust system.**



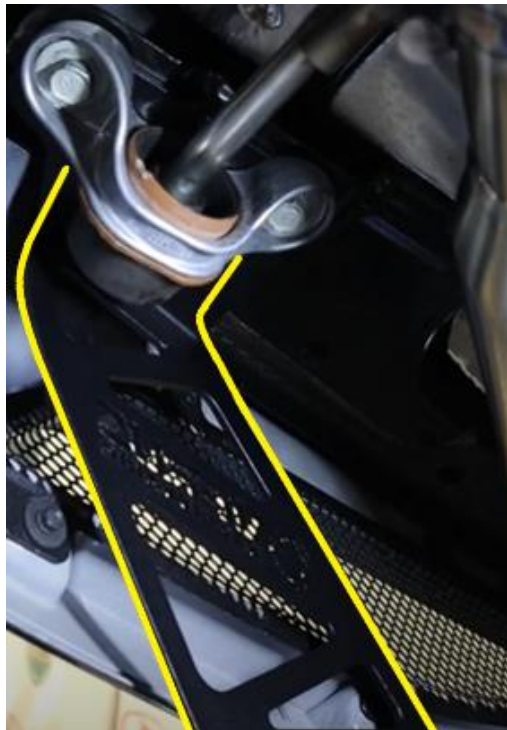
Confidential: Property of Verus Engineering. Not for Distribution outside intended recipient list.

Sheet Metal Diffuser, C8 Corvette Stingray – Install Manual

11. Remove the (2) 13mm head bolts from the exhaust hanger. **Note: For your safety, make sure you have one exhaust hanger connected at all times. You can do this by completing all the work on the driver's side before moving to the Passenger's side.**

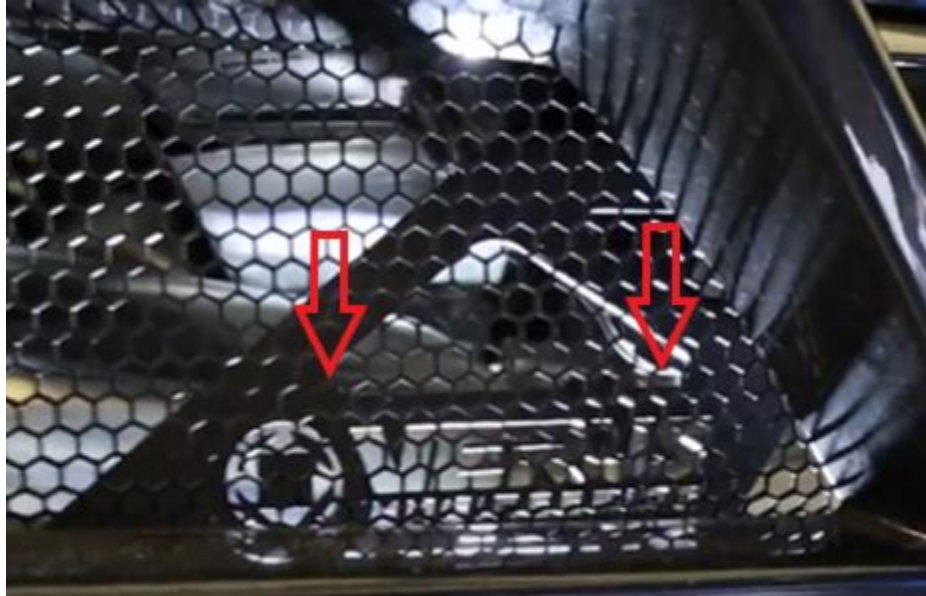


12. Install one of the diffuser brackets by sandwiching it between the body and exhaust hanger. Loosely reinstall the 13 mm head bolts. **Note: The Passenger side is shown below. Notice the Verus logo is legible through the bumper grille.**



Confidential: Property of Verus Engineering. Not for Distribution outside intended recipient list.

Sheet Metal Diffuser, C8 Corvette Stingray – Install Manual



13. With the first side loosely reinstalled, repeat the process to install the bracket on the remaining side. **Note: Loosely reinstalling the hanger hardware will give us some wiggle room to adjust diffuser fitment before final installation.**



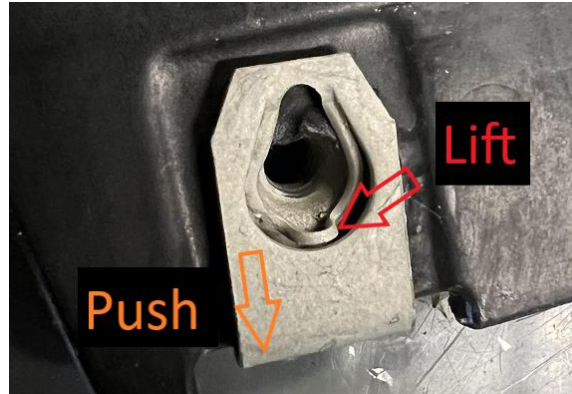
14. We now need to shift back to the splash shield we removed in **Step 4**. The front clip-on nuts will need to be removed and reused on the car.



Confidential: Property of Verus Engineering. Not for Distribution outside intended recipient list.

Sheet Metal Diffuser, C8 Corvette Stingray – Install Manual

15. In order to remove the clip-on nuts, lift up on the tab shown below and push clip-on nut from the splash shield.

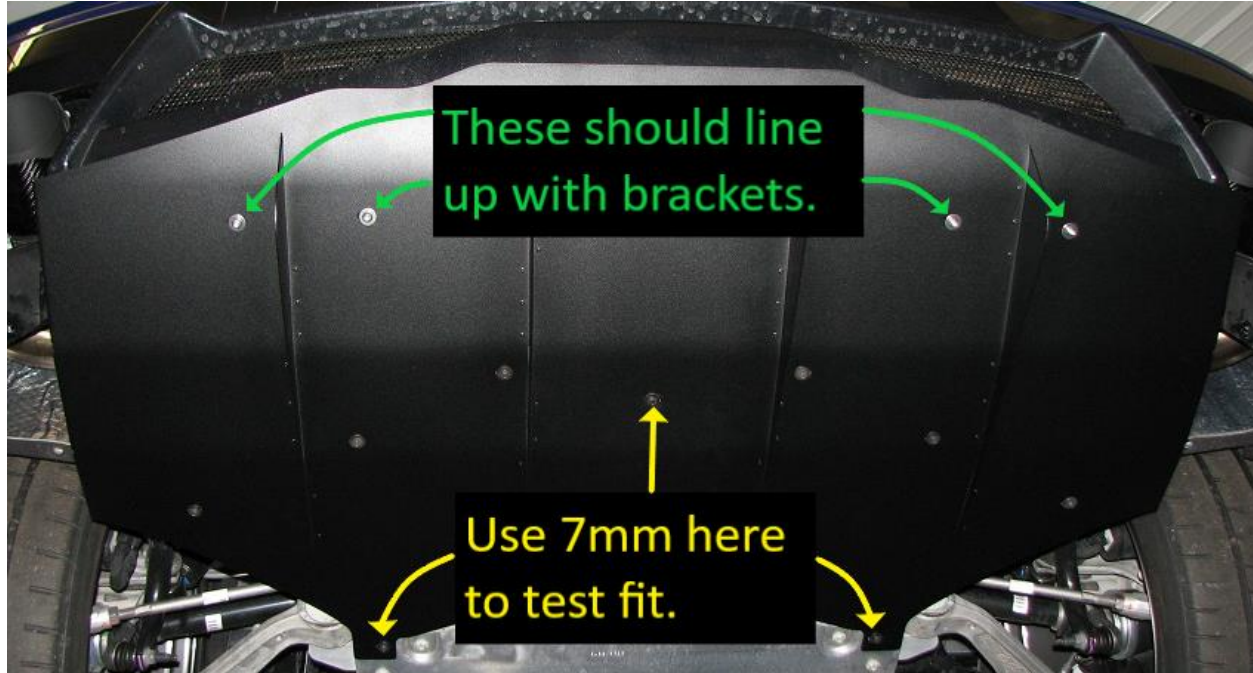


16. Install the clip-on nuts (removed in the previous step) onto the engine splash shield. Locations depicted with red arrows below. **Note: Threaded side of clip-on nut should point up/towards the car.**

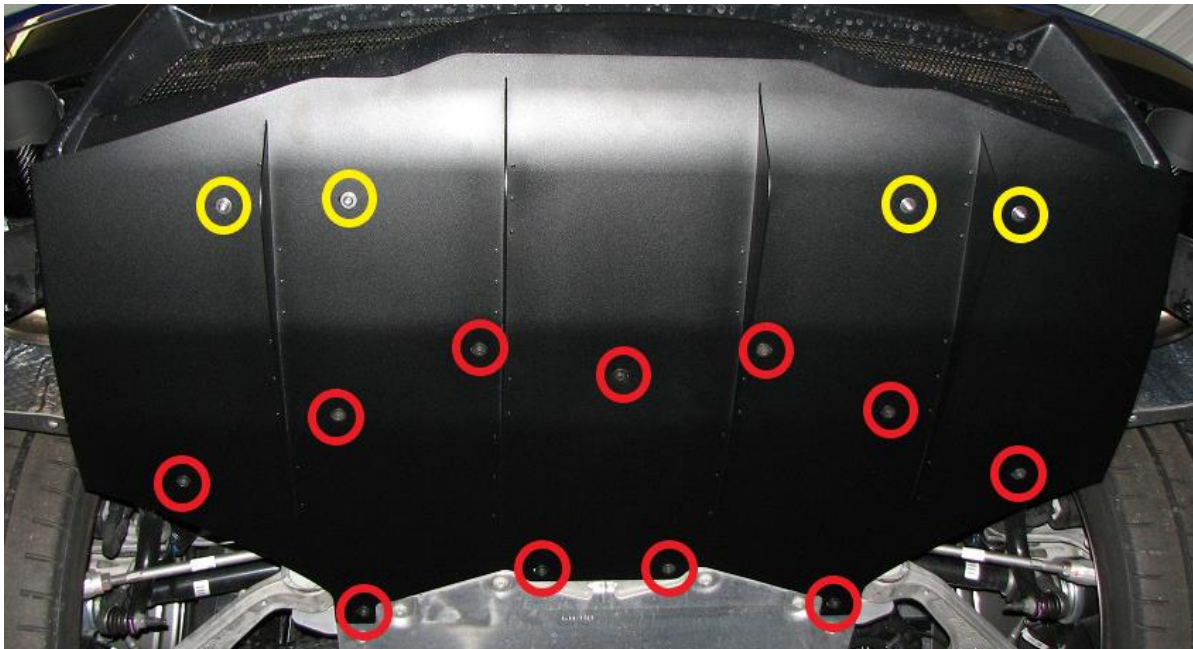


17. Test fit the main diffuser element at this time. Use this step to adjust the fitment of brackets previously installed in **Steps 11 and 12**. **Note: We used the center 7mm head screw along with (2) front 7mm screws to gauge fitment.**

Sheet Metal Diffuser, C8 Corvette Stingray – Install Manual



18. Once desired fitment is reached, remove the main diffuser element and fully tighten down all (4) exhaust hanger bolts.
19. The main diffuser element can now be installed for the final time using the (11) factory 7mm head screws circled in red below, (4) M6 BHCS, and (4) M6 washers (circled in yellow below).



Confidential: Property of Verus Engineering. Not for Distribution outside intended recipient list.

Sheet Metal Diffuser, C8 Corvette Stingray – Install Manual

20. On the back side of the BHCS, finger tighten on the (4) M6 serrated nuts (Driver's side circled in yellow below).



21. Leaving the main diffuser plate hardware loose, we now move on to the side plates.
22. In order to prepare the side plates for installation, the M6 clip-on nuts install on the larger oval holes of the side plates with the threaded portion facing up/towards the car once installed (Driver's side shown below).



Confidential: Property of Verus Engineering. Not for Distribution outside intended recipient list.

Sheet Metal Diffuser, C8 Corvette Stingray – Install Manual

23. The M4 clip-on nuts install on the smaller circular holes of the side plates. Once again, the threaded side of the clip-on nuts face up (Driver's side shown below).



24. Repeat the process on the remaining side.
25. To install the side plates, angle them up into bumper then shift pressure upward. The side plates have some flexibility and can be slightly manipulated to get them into place.



26. Once the side plate is all the way in, it should look like the image below. **Note: Be mindful of the portion circled below, it may damage the bumper if the side plate is not carefully installed.**

Sheet Metal Diffuser, C8 Corvette Stingray – Install Manual



27. Repeat installation on the remaining side. **Note: The fully installed side plate should sit flush and flat with the fender liner as shown in the image below.**



28. At this time, you need to decide if you want to use the stainless or black oxide hardware.
29. The M6 clip-on nuts on the front of the side plates will receive (2) M6 16mm long BHCS with the 18mm OD washer or 1/4" black oxide washer. **Note: Loosely install these fasteners so the side plate can still be adjusted.**



Confidential: Property of Verus Engineering. Not for Distribution outside intended recipient list.

Sheet Metal Diffuser, C8 Corvette Stingray – Install Manual

30. Next, install the M4 16mm long BHCS stainless or black oxide with washer in the M4 clip on nuts towards the rear of the side plate. **Note: These fasteners should be left loose as well so side plate can be adjusted in later steps.**



31. Loosely install all hardware for the remaining side plate before proceeding.
32. Once the side plates are loosely installed, we can now install the diffuser strake shown below.



33. Place the diffuser strake between the main and side plate. Use the M6 16mm long BHCS stainless or black oxide with washer, and M6 serrated nut to fasten all (3) layers together. **Note: Use the slots in the diffuser strake to adjust fitment. We recommend matching the height and angle of the strakes riveted to the main diffuser plate.**



Confidential: Property of Verus Engineering. Not for Distribution outside intended recipient list.

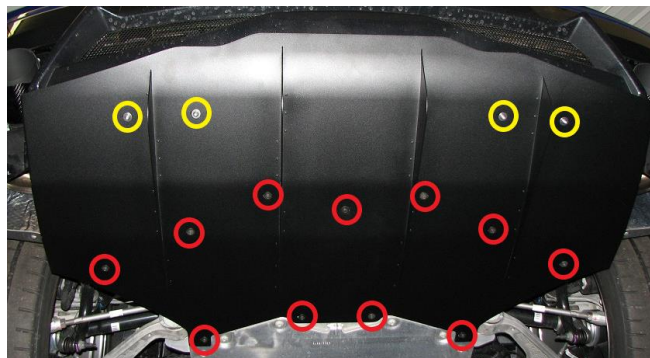
Sheet Metal Diffuser, C8 Corvette Stingray – Install Manual



34. Repeat the strake mounting and adjusting process on the remaining side.
35. Tighten down all strake hardware at this time. **Note: We recommend using an impact with a 4mm allen socket to tighten down strake hardware. This better helps the serrated nuts to engage so that there is no need to hold the nut on the backside.**



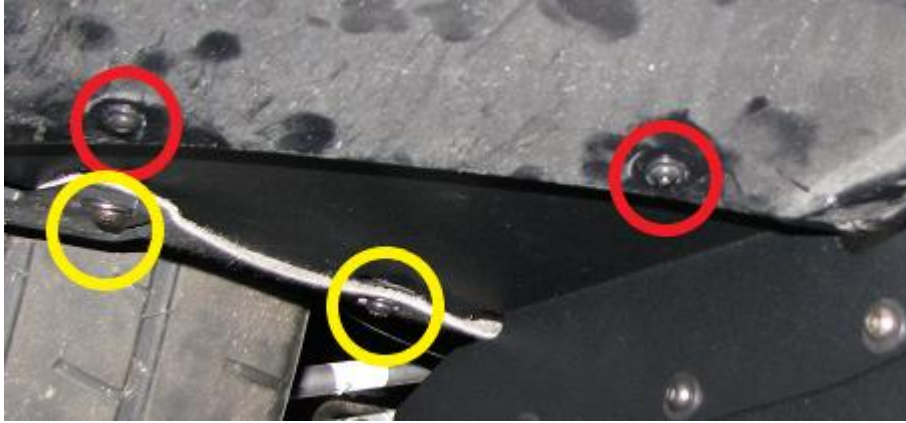
36. At this time, make sure all the diffuser sections fit even with the car and each other. Make any adjustments needed before proceeding.
37. Next, tighten down the 7mm head screws (circled in red) and the 4mm allen BHCS (circled in yellow) main plate hardware. **Note: Use the same impact technique to engage the serrated nut for the 4mm allen BHCS.**



Confidential: Property of Verus Engineering. Not for Distribution outside intended recipient list.

Sheet Metal Diffuser, C8 Corvette Stingray – Install Manual

38. Lastly, the M4 and M6 BHCS on the side plates can be tightened down. **Note: We recommend tightening the M4 BHCS first, then the M6 BHCS. This reduces stress on the M4 threads while tightening.**



39. The car can now be lowered back on the ground.
40. Congratulations! You have just completed installation of the Verus Engineering Sheet Metal Rear Diffuser on your C8 Corvette Stingray!
41. Please contact Verus Engineering with any questions, comments, concerns, and feedback via support@verus-engineering.com.



Confidential: Property of Verus Engineering. Not for Distribution outside intended recipient list.