

VERUS ENGINEERING

Side Splitter Kit – 2008-2014 Subaru WRX / STI Install Manual



Author: Eric Hazen

Release Date: 2020/11/01

Approvals: E. Hazen, C. Warner

Document Revisions

Rev	Date	Author	Description
01	2020/11/01	E. Hazen	Initial release of install manual

Side Splitter Kit, 2008-2014 Subaru WRX/STI – Install Manual

CONTENTS

1. Introduction.....	<3>
1.1. Overview.....	<3>
1.2. Difficult	<3>
1.3. Time Required.....	<3>
1.4. Tools Needed	<3>
1.5. Side Splitter Components	<3>
2. Side Splitter Kit Install	<4-8>

Side Splitter Kit, 2008-2014 Subaru WRX/STI – Install Manual

1. Introduction

1.1. Overview: Detailed instructions on installing the Verus Engineering Side Splitter Kit for the 2008-2014 Subaru WRX STI.

1.2. Difficulty: Easy

1.3. Time Required: 1 – 2 Hours

1.4. Tools Needed:

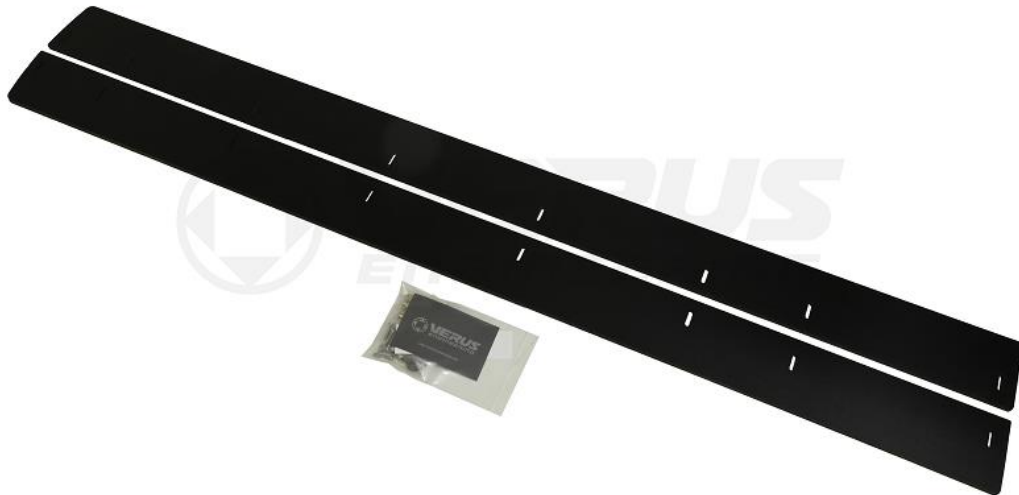
- 1.4.1. Drill
- 1.4.2. Paint Marker/Sharpie
- 1.4.3. Center Punch/Sharp Tap
- 1.4.4. 1/8" drill bit
- 1.4.5. 3/8" Drill Bit
- 1.4.6. Alternatively, a step bit works as well
- 1.4.7. 4mm Allen Wrench/Allen Socket
- 1.4.8. 5mm Allen Wrench/Allen Socket
- 1.4.9. 9/16" Wrench
- 1.4.10. 90 Degree Counter Sink/Chamfer (Optional)

1.5. Side Splitter Kit Components

1.5.1. (2) Side Splitter

1.5.2. Hardware Bag

- 1.5.2.1.** (17) M6 x 1.0 BHCS (Button Head Cap Screw) x 30mm Long, Stainless
- 1.5.2.2.** (17) M6 x 38mm Stainless Washer
- 1.5.2.3.** (16) M6 x 1.0 Rivet Nut for Plastic
- 1.5.2.4.** (1) M6 x 1.0 Rivet Nut Install Tool



Confidential: Property of Verus Engineering. Not for Distribution outside intended recipient list.

Side Splitter Kit, 2008-2014 Subaru WRX/STI – Install Manual

2. Side Splitter Kit Install

- 2.1. Verus Engineering is not responsible for damage to you or your vehicle by following this manual and/or installing Verus Engineering products.
- 2.2. We begin by gaining access to under the car. You can jack up one side at a time, or work on a lift, just be careful in either case and use safe practices.
- 2.3. With a friend, or by yourself, you will hold the side splitter up to the factory side splitter.
- 2.4. To mark the locations of the holes, place the side splitter so that the slots are all barely not visible from the top. Mark the inner part of the slot with either a sharpie or a center punch.



- 2.5. Grab the drill and a 1/8" drill bit and drill the center punched holes.



Confidential: Property of Verus Engineering. Not for Distribution outside intended recipient list.

Side Splitter Kit, 2008-2014 Subaru WRX/STI – Install Manual

- 2.6. Open the holes up to 3/8" for the rivet nuts to be installed. Use either the step drill bit or a 3/8 drill.

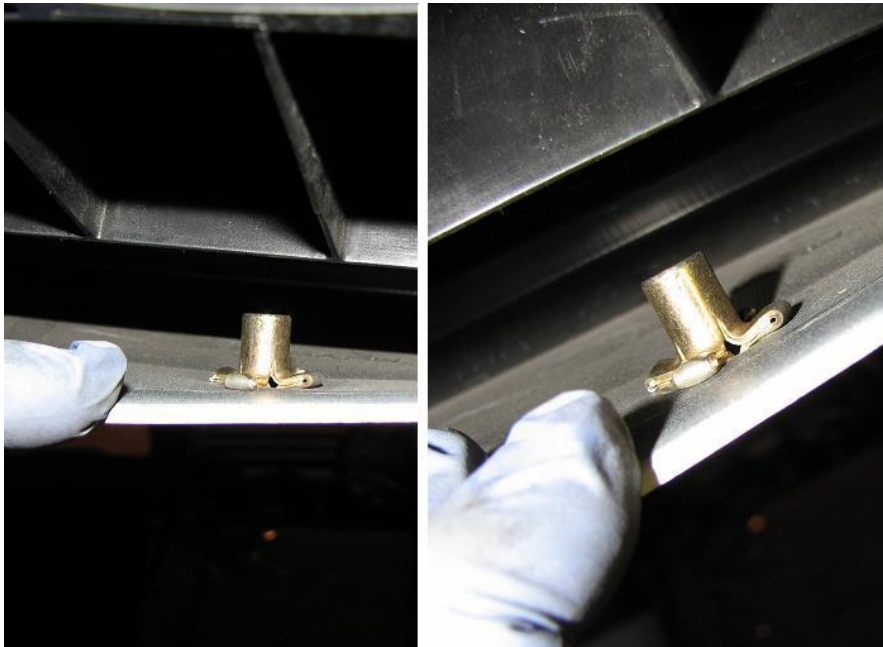


- 2.7. To properly install the rivet nut, you will want to thread the rivet nut onto the tool as shown below.



- 2.8. Using the 9/16" wrench and the 5mm Allen wrench, hold the nut steady and tighten the Allen bolt. You will have some initial resistance, then the rivet nut will begin to pull tighter on the material.
- 2.9. **Note: If the bolt becomes difficult to thread into the rivet nut, swap to a NEW bolt. Using oil or some other form of lubricant can help keep the bolt from gulling as well.**
- 2.10. Below is a picture of these units properly installed from the top and bottom.

Side Splitter Kit, 2008-2014 Subaru WRX/STI – Install Manual



- 2.11.** With all the rivet nuts installed, we can now install the side splitters.
- 2.12.** Utilizing the M6 bolts and the large washers, install all the bolts loosely.
- 2.13.** Once all bolts are finger tight, you can tighten them to 6 ft-lbs.

Confidential: Property of Verus Engineering. Not for Distribution outside intended recipient list.

Side Splitter Kit, 2008-2014 Subaru WRX/STI – Install Manual



- 2.14. The side splitters are adjustable in and out, 25mm.
- 2.15. Congratulations on installing the side splitters for the Subaru WRX/STI! For more information on performance, please visit our website and take a look at the Ventus packets available.
- 2.16. Please send any questions, comments, concerns, or photos to Verus Engineering via e-mail; sales@verus-engineering.com.

Side Splitter Kit, 2008-2014 Subaru WRX/STI – Install Manual



Confidential: Property of Verus Engineering. Not for Distribution outside intended recipient list.